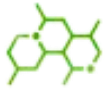


ECOSILC COLORS

Elastic, soft-touch silicon inks with superior durability and vibrant colors.



Chemical Nature
Silicone Polymer



Ionic Nature
Non-Ionic



pH
 $\approx 7 \pm 0.5$



Physical Appearance
Colored Paste



Fabric Type
Cotton, PES, CO/PES
blend fabric



Squeegee
Shore: Medium 65



Mesh
Count: 43-120 T



Storage
12 months, 25-35 °C



Health & Safety
SDS available upon
request



Color Range:

- | | | | |
|-------------|-----------|-------------|--------------|
| ▶ White | ▶ Orange | ▶ Green | ▶ FL Red |
| ▶ Black | ▶ Red | ▶ Blue | ▶ FL Green |
| ▶ L. Yellow | ▶ Magenta | ▶ T. Blue | ▶ FL Blue |
| ▶ G. Yellow | ▶ Violet | ▶ FL Yellow | ▶ FL Magenta |



Product Features:

- Imparts a soft and smooth touch to the fabric, making it comfortable to wear.
- It provides excellent elasticity, allowing the printed fabric to stretch without cracking the print.
- Provides excellent wash fastness, maintaining print quality even after multiple washes and wears.
- Highly durable and resistant to washing, making them ideal for garments that need to withstand repeated laundering.
- Suitable for machine and manual printing.



Application:

- **Printing:**
 - ▶ Mix with 2 to 5% **Ecosilc Catalyst** & then print.
 - ▶ Crosslink at 150° -160 °C (3-2 Min).
- **Cleaning:**
 - ▶ Clean the screen with **Ecosilc Thinner** after printing.



www.printexchemicals.com



info@printexchemicals.com



Information concerning the safety regulations can be taken from the Material Safety Data Sheet of this product. We reserve the right to modify the product and technical leaflet. Our department for applied technique is always at the service for further information and advice.