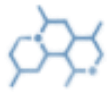


# ENZYLASE HT

## Alpha-Amylase Enzyme for Desizing.



### Chemical Nature

$\alpha$ -Amylase



### pH

5-6



### Physical Appearance

Brown Liquid



### Solubility

Soluble in water



### Odor

Slight Fermentation Odor



### Fabric Type

Cotton and PC



### Storage

12 months, 25-35 °C.



### Health & Safety

SDS available upon request



## Product Features

- ENZYLASE HT is highly effective in breaking down starches, ensuring thorough removal from fabrics.
- Exhibits high enzymatic activity, leading to quick and complete starch degradation.
- Improves the final quality of fabrics by preventing starch residue that can cause stiffness..
- ENZYLASE HT is compatible with the wetting agents and surfactants used in desizing.
- As a biodegradable enzyme, ENZYLASE HT supports eco-friendly textile processing practices.



## Application

- The optimum temperature for **ENZYLASE HT** application in textile desizing is 70 to 100°C.
- The optimum pH for **ENZYLASE HT** impregnation solutions should be 5 to 6.5.
- The recommended dosage of **ENZYLASE HT** for effective size removal is as follows.
  - **Exhaust process:** 0.5% to 1% owf
  - **Padding Process:** 2 to 3 g/l



## Compatibility

- **Hard Water:**
  - Good (calcium ions promote enzyme action)
- **Acids**
  - Good (between pH range 5 - 6.5)
- **Catalysts**
  - Iron & Copper ions denature **ENZYLASE HT**.



[www.printexchemicals.com](http://www.printexchemicals.com)



[info@printexchemicals.com](mailto:info@printexchemicals.com)



Information concerning the safety regulations can be taken from the Material Safety Data Sheet of this product. We reserve the right to modify the product and technical leaflet. Our department for applied technique is always at your service for further information and advice.