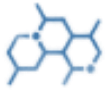


ENZYLASE CR

Acid Cellulase Bio Polish Enzyme.



Chemical Nature
Acid Cellulase



pH
5-6



Physical Appearance
Amber Liquid



Solubility
Soluble in water



Odor
Slight Fermentation
Odor



Fabric Type
Cotton and PC



Storage
12 months, 25-35 °C.



Health & Safety
SDS available upon
request



Product Features

- Efficiently hydrolyzes cellulose fibers to reduce pilling, improving fabric appearance and feel.
- Enhances the smoothness and softness of fabrics by removing surface fuzz and loose fibers.
- Helps maintain and enhance the brightness and intensity of fabric colors by eliminating microfibrils that trap dirt and dull the appearance.
- It is suitable for various textile processes, including bio-polishing & garment washing.
- Biodegradable and environmentally friendly, contributing to sustainable textile manufacturing practices.



Application

- The optimum dosage of **ENZYLASE CR** depends upon various factors.
- Recommended dosage of **ENZYLASE CR** is
 - For fabrics: 0.5– 1% OWF.
 - For garments: 0.5 – 1% OWF.
 - 30 – 45 minutes, 45-55°C & 4.5– 5.5 pH.
- When necessary, **ENZYLASE CR** can be inactivated by increasing the pH of the bio-finishing bath to a pH >9.0 and holding for 5 minutes. Soda Ash, borax, or alkaline detergent are recommended for the pH adjustment.



www.printexchemicals.com



info@printexchemicals.com



Information concerning the safety regulations can be taken from the Material Safety Data Sheet of this product. We reserve the right to modify the product and technical leaflet. Our department for applied technique is always at your service for further information and advice.