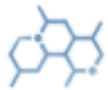


EBBESOFT LCH-20

Ester Quartz Softener Paste.



Chemical Nature

Blend of ester quarts & Silicones



Ionic Nature

Cationic



pH

2-3



Physical Appearance

Translucent Emulsion



Solubility

Soluble in water



Fabric Type

Knitted and Woven fabrics of all kinds



Storage

12 months, 25-35 °C.



Health & Safety

SDS available upon request



Product Feature

- **EBBESOFT LCH-20** gives very smooth and voluminous handle on all kind of cellulosic fibers or its blend with synthetics.
- **EBBESOFT CH-20** is specially developed for the Towels and gives a fat handle.
- **EBBESOFT CH-20** increases the resilience of fabric.
- **EBBESOFT CH-20** considerably improves the handle in the case of "Open End "thread articles.
- **EBBESOFT CH-20** decreases the tendency to crease.
- **EBBESOFT CH-20** is ecological and biodegradable Product.



Application

- **EBBESOFT LCH-20** can be mixed, at any ratio, with cold and weakly acidic water.
- **EBBESOFT LCH-20** is suitable for a large variety of articles: knitted and woven cotton fabrics and its blend.
- The quantities of application depend on the kind of article, its composition, and the desired effect.
- **Exhaustion Process:**
 - 2-4 % EBBESOFT LCH-20, pH 4.5-5.5
 - 20 minutes at 40°C
- **By Pad Application:**
 - 20-40 g/l EBBESOFT LCH-20, Pick up: 75-85%
 - Dry at 120 °C-130 °C



www.printexchemicals.com



info@printexchemicals.com



Information concerning the safety regulations can be taken from the Material Safety Data Sheet of this product. We reserve the right to modify the product and technical leaflet. Our department for applied technique is always at your service for further information and advice.