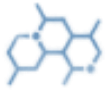


# EBBESOFT LC

## Softener for All Kinds of Textile Fibers.



### Chemical Nature

Blend of hydrophobic ester quarts & Silicones



### Ionic Nature

Cationic



### pH

4-5



### Physical Appearance

Milky Beige Emulsion



### Solubility

Soluble in water



### Fabric Type

Knitted and Woven fabrics of all kinds



### Storage

12 months, 25-35 °C.



### Health & Safety

SDS available upon request



## Product Feature

- Very Smooth and Voluminous Handle.
- Good Elasticity.
- Good recovery of hair in pane and velvet.
- Increasing the resilience.
- It considerably improves the handle in the case of “Open End “thread articles.
- Does not yellowish and is not volatile in water steam.
- Good fastness to wet and dry washing.
- Decreases the tendency to crease.
- Ecological and biodegradable Product
- Antistatic Effect



## Application

- **EBBESOFT LC** can be mixed, at any ratio, with cold and weakly acidic water.
- **EBBESOFT LC** is suitable for a large variety of articles: knitted and woven cotton fabrics and its blend.
- The quantities of application depend on the kind of article, its composition and the desired effect.
- **Exhaustion Process:**
  - 2-4 % **EBBESOFT LC**, pH 4.5-5.5
  - 20 minutes at 40°C
- **By Pad Application:**
  - 10-40 g/l **EBBESOFT LC**, Pick up: 75-85%
  - Dry at 120 °C-130 °C



[www.printexchemicals.com](http://www.printexchemicals.com)



[info@printexchemicals.com](mailto:info@printexchemicals.com)



Information concerning the safety regulations can be taken from the Material Safety Data Sheet of this product. We reserve the right to modify the product and technical leaflet. Our department for applied technique is always at your service for further information and advice.