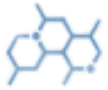


EBBESOFT LC CONC.

Conc. Ester Quartz Softener



Chemical Nature

Blend of hydrophobic ester quarts & Silicones



Ionic Nature

Cationic



pH

3-4



Physical Appearance

Milky Beige Emulsion



Solubility

Soluble in water



Fabric Type

Knitted and Woven fabrics of all kinds



Storage

12 months, 25-35 °C.



Health & Safety

SDS available upon request



Product Feature

- Very Smooth and Voluminous Handle.
- Good Elasticity.
- Good recovery of hair in pane and velvet.
- Increasing the resilience.
- It considerably improves the handle in the case of “Open End “thread articles.
- Does not yellowish and is not volatile in water steam.
- Good fastness to wet and dry washing.
- Decreases the tendency to crease.
- Ecological and biodegradable Product
- Antistatic Effect



Application

- **Dilution Recipe**
 - Dilute at 40 °C as recommended below
 - Water 78%
 - Acetic Acid 1%
 - EBBESOFT LC CONC. 20%
 - NaCl 1%
- **Exhaustion Process:**
 - 2-4 % **EBBESOFT LC CONC**, pH 4.5-5.5
 - 20 minutes at 40°C
- **By Pad Application:**
 - 10-40 g/l **EBBESOFT LC CONC**, Pick up: 75-85%
 - Dry at 120 °C-130 °C



www.printexchemicals.com



info@printexchemicals.com



Information concerning the safety regulations can be taken from the Material Safety Data Sheet of this product. We reserve the right to modify the product and technical leaflet. Our department for applied technique is always at your service for further information and advice.