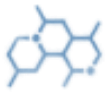


EBBE PEN

Polyethylene Emulsion



Chemical Nature

Blend of polyethylene waxes & additives



Ionic Nature

Anionic



pH

Pure, 7.0-9.0



Physical Appearance

Milky Beige liquid



Storage

12 months, 25-35 °C.



Health & Safety

SDS available upon request



Applications

- **Diluting instructions:**
 - **EBBE PEN** is miscible with water at any ratio.
- **Recommendation of application:**
- The quantities to apply depend on the material to be treated and the desired effect.
- **Recipe proposals for padding:**
 - Improvement of the sewing: 5-10 gr/l. EBBE PEN
 - Additive in the high finishing: 10-15 gr/l. EBBE PEN
 - Raising softener: 5-10 gr/l. EBBE PEN
- Always referred to a bath absorption of approx. 80% dry'-in-wet.
- **Example of recipe for the exhaustion process:**
 - 0.5 – 1.0% EBBE PEN
 - pH: 5,5 with acetic add.
 - Bath ratio: 1:10 – 1:15
 - Treat 20 min. at 40 °C, dry.



Product Features

- It is appropriate as a sewing additive for all kinds of fibers and gives the fabric an excellent surface smoothness and a pleasant softness.
- If the product is applied on very thin knitted items, these ones can be more easily sewed. The damage of network is reduced.
- **EBBE PEN** can be combined with all kind of softeners to achieve the best fabric handle and a better sewing power.
- **EBBE PEN** is stable to the sublimation and is appropriate to the application in liquors of high finishing, keeping on the usual properties of an additive.
- The abrasion values tested in the apparel "Accelerator" are better by adding **EBBE PEN** in the high-finishing recipes.
- The resistance to the split is notably improved in processes of high finishing.
- **EBBE PEN** is optically appropriate for white fabrics given that it does not get yellow. It is compatible with brightening agents and has no influence in the white degree.
- It has a low affinity to the cotton and for this reason, it is applied preferentially in the padding processes.
- The application by process can have sense when the product is applied as additive to improve the handle or the sewing together with a softening product. In the case of this combination, **EBBE PEN** exhausts also on the fabric because of driving effects.
- **EBBE PEN** is very resistant to washing and dry cleaning. If the product is regularly applied, the redyeing runs without any problem.



www.printexchemicals.com



info@printexchemicals.com



Information concerning the safety regulations can be taken from the Material Safety Data Sheet of this product. We reserve the right to modify the product and technical leaflet. Our department for applied technique is always at your service for further information and advice.