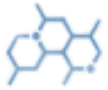


# ACTALUBE

## To Prevent Crease Formation During the Exhaust Rope Dyeing Process.



### Chemical Nature

Mixture of polyethylene and special additives.



### Ionic Nature

Weakly Anionic



pH  
9-10



### Physical Appearance

Light Yellow Liquid



### Solubility

Soluble in water



### Fabric Type

Cotton and blends.



### Storage

12 months, 25-35 °C.



### Health & Safety

SDS available upon request



### Product Feature

- **ACTALUBE** imparts excellent gliding properties, and crease marks are effectively prevented.
- **ACTALUBE** is stable to dilute acids and dilute alkalis.
- **ACTALUBE** does not cause any yellowing of fabric and does not affect whiteness and color shade.
- **ACTALUBE** is compatible with anionic and cationic auxiliaries.
- **ACTALUBE** is a non-foaming product.
- **ACTALUBE** is easy to dissolve in cold water to meet the automatic dosage system.
- **ACTALUBE** is not sensitive to hard water and heat.



### Application

- **ACTALUBE** is applicable in all-cotton dyeing with all kinds of machines.
- As it is resistant to acids, it can also be used in one-bath dyeing on fiber blends with reactive, acid, or disperse dyes.
- **Recommend Dosage:**
  - 0.5 – 2 g/l **ACTALUBE**



[www.printexchemicals.com](http://www.printexchemicals.com)



[info@printexchemicals.com](mailto:info@printexchemicals.com)



Information concerning the safety regulations can be taken from the Material Safety Data Sheet of this product. We reserve the right to modify the product and technical leaflet. Our department for applied technique is always at your service for further information and advice.